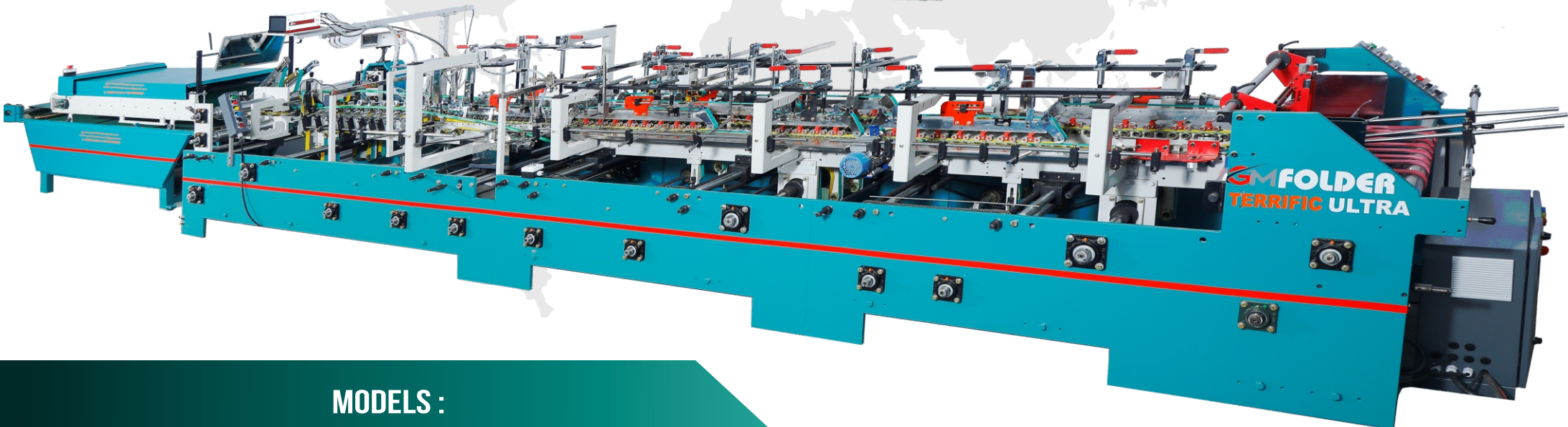
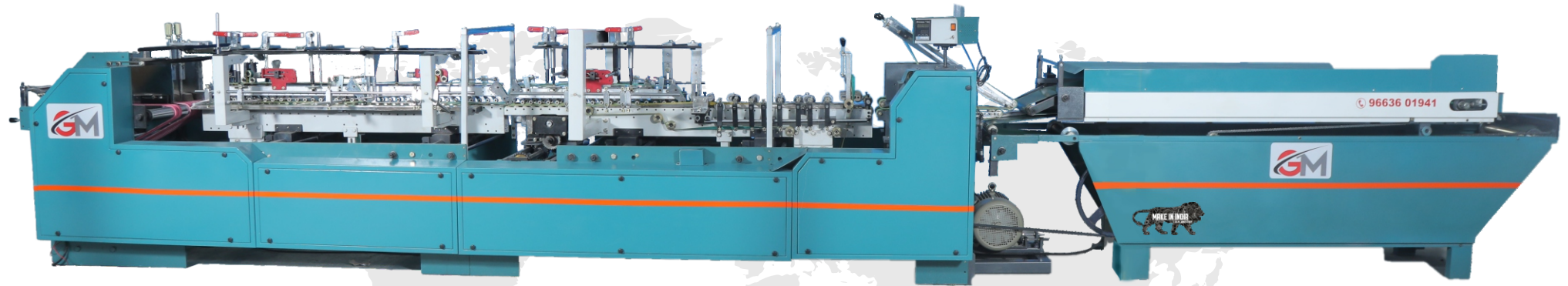


GM FOLDER GLUER PACK

New Machine Launched



MODELS :

TERRIFIC | TERRIFIC PRO | TERRIFIC ULTRA | TERRIFIC TINY

Automatic High Speed Carton Folding & Gluing Machine

Manufacturers Of Automatic Carton Folding Gluer,
Cache Cover & Allied Machineries

FEEDER UNIT



GLUING UNIT



FINAL FOLDING UNIT



DELIVERY UNIT



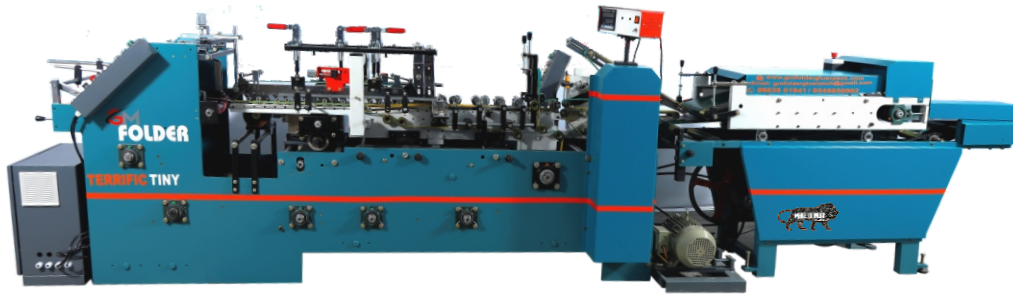
SPRAY GLUE SYSTEM



ACCESORIES



Automatic High Speed Carton Folding & Gluing Machine



Features

- Feeder variator and feeder clutch
- Spring loaded suspension top track
- Sealed bearings reducing maintenance
- Smooth mechanized bottom track
- High grip transmission belts
- Timer belt drive
- Auto corrosive powder coated frame
- Stainless steel glue tank and glue wheel
- Easy lift cams for top conveyor.
- Machine mounted on anti vibrator pads.

Accessories

- PLC with drive and HMI touch screen.
- Separate motorised drive for pressure delivery unit.
- Plasma treatment for glue flap
- Glue flap grinding attachment.
- Crash lock bottom
- Electronic nozzle gluing system
- Motorised feeder vibrator.

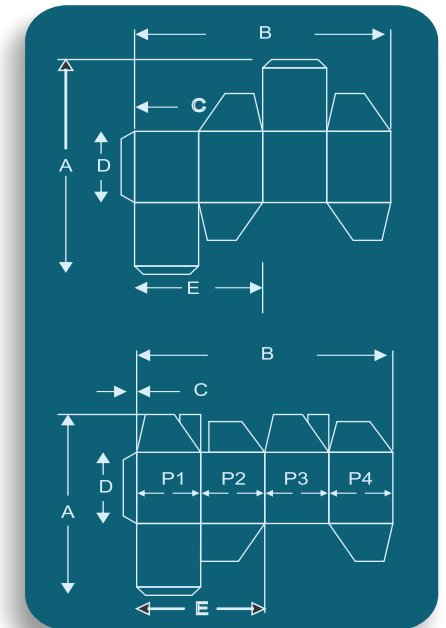
TECHNICAL SPECIFICATION

Straight Line Carton

Dimension	GM-HSLB 35	GM-HSLB 45	GM-HSLB 55	GM-HSLB 65
A-max	350	350	500	500
A-min	80	80	100	100
B-max	350	450	550	650
B-min	70	80	100	100
C-min	7	7	8	8
D-min	60	60	60	70
E-min	60	60	60	70

Crash Lock Bottom & Corrugated 3 Ply Carton

Dimension	GM-HSLB 45	GM-HSLB 55	GM-HSLB 65
A-max	350	500	500
A-min	80	100	100
B-max	450	550	650
B-min	120	120	120
C-min	7	8	8
D-min	60	60	70
E-min	60	60	70
P1-min	P2-min	P3-min	P4-min
30	30	30	30



GM FOLDER GLUER PACK

102, Ground Floor, Andrahalli Main Road, Navilu Nagar,
Thigalarapalya, Bengaluru - 560 058

E-mail : gmfoldergluerpack@gmail.com / Web : www.gmfoldergluerpack.com

Mob : 96636 01941 / 8546850902